
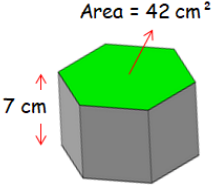


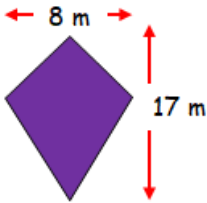
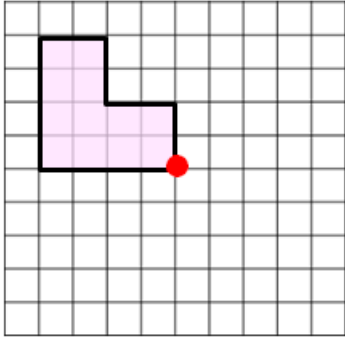




Name:	Date:
<p>1 Divide \$600 in the ratio of 4 : 11.</p> 	<p>MNU 408a Bronze Outcome 2</p>
<p>2 Calculate the volume of this prism.</p> 	<p>MTH 411c Bronze Outcome 1</p>
<p>3 In a class of 30 there are 18 girls. What percentage of the class are boys?</p> 	<p>MNU 407a Silver Outcome 3</p> 
<p>4 Calculate the area of this kite.</p> 	<p>MNU 411a Silver Outcome 1</p>
<p>5 Complete the shape opposite so that it has rotational symmetry of order 2 around the dot.</p>	<p>MTH 419a Silver Outcome 1</p> 
My score:	



Exam Questions

Question 1:



MNU 420a Gold Outcome 1

Some biology students were doing a project on "creepy crawlies". The pie chart shows the different types of creepy crawlies that the students collected from a garden.

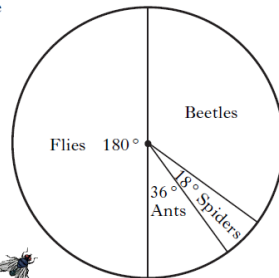
The students collected 220 creepy crawlies altogether.

How many of them were beetles?

3



CREEPY CRAWLIES



Question 2:



MTH 416a Bronze Outcome 1

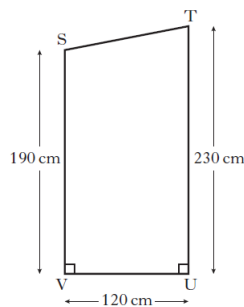
Maggie has bought a garden shed.

The dimensions for one side of the shed are shown in the diagram below.

Calculate the length of ST.

Do not use a scale drawing.

4



Question 3:



MTH 420b Silver Outcomes 1 & 2

Two classes of fourteen pupils at Oakland Academy collected money for a local charity.

Listed below are the amounts (in £) collected by the pupils in class 5C.

27 26 17 27 18 21 23 19 18 27 24 20 31 28

(a) Find the median.

2

(b) Find the range.

1

(c) For class 5M the median was £10 and the range was £17.

Make **two** comments comparing the amounts collected by the pupils in class 5C and class 5M.

2



Question 4:



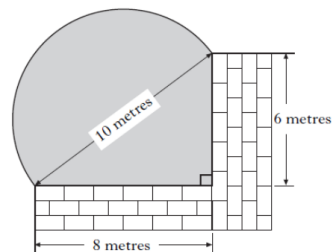
MTH 416b Gold Outcome 2

The diagram below shows part of a garden which is being watered from a sprinkler.

The area being watered is in the shape of a semi-circle and a right angled triangle.

Calculate the area being watered.

4



Question 5:



MNU 410a Bronze Outcome 1

Ross drove 190 miles from Preston to Edinburgh in 3 hours 30 minutes.

During the first part of his journey he drove for 2 hours at an average speed of 68 miles per hour.

Find the average speed in miles per hour for the rest of his journey.

4



My score: