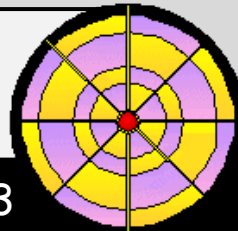


The Daily Rigour

Sun 29th September 2019

Issue No. 173



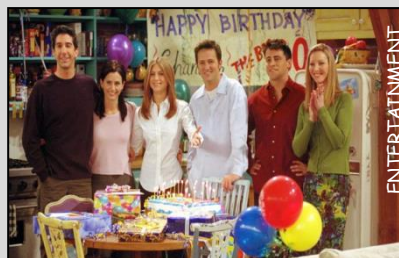
Your free weekly numeracy newspaper!

TV Sitcom Friends celebrates 25th Birthday

Ross, Rachel, Joey, Monica, Chandler and Phoebe have been there for us for 25 years. They are still there for us, and there's no sign of them going anywhere soon as Friends was the UK's favourite streaming show in 2018.

The show first hit TV screens 25 years ago last Sunday.

On what date did the first episode hit our screens?

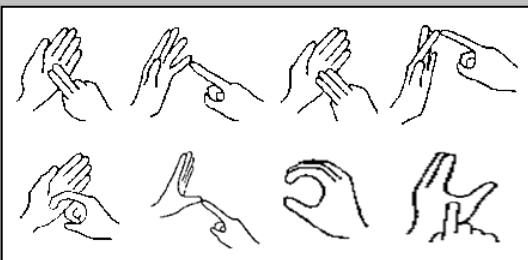


Cdmasterworks Ltd

International Day of Sign Languages celebrated this week

International Day of Sign Languages is celebrated annually across the world on the 23rd of September every year.

- (a) What day of the week was IDSL day celebrated on this year?
- (b) Can you work out what word is signed below?



- (c) Draw the signs for your name and sign it to your friend.



Rutland: England's only county without a McDonald's ^{UK}

The picturesque county of Rutland boasts a Michelin-star restaurant, dozens of gourmet eateries and regular farmers' markets - but what it doesn't have is anywhere to pick up a Big Mac.



This may all be about to change however as McDonalds have submitted a planning application for a drive-through restaurant on the outskirts of the town of Oakham.

Believe it or not there are a PRIME NUMBER of McDonalds restaurants currently in the UK.

In fact, the 204th prime number is the current number of McDonalds restaurants in the UK!

Can you work out the number of McDonalds restaurants currently in the UK?

****BIG HINT**** The first 203 prime numbers are all less than 1238!

You could soon fly from the UK to Australia in just four hours thanks to new engine

Travellers could soon fly from the UK to Australia in just four hours thanks to a new engine that is currently in development.



Reaction Engines, a UK-based firm, has been working on a Synergetic Air Breathing Rocket Engine (SABRE) which could propel an aircraft to Mach 5.4 - approximately five times the speed of sound!

The distance from the UK to Australia is 9440 miles. What must the average speed of a plane propelled by this new engine be in order to complete the journey in the stated time?