



## Outcome 1

## Comparing Probabilities

In each of these situations, decide which is the more likely to happen. Give a reason for your answer each time.



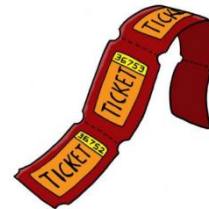
1

Bus 1 has a 9 in 40 chance of arriving late.  
Bus 2 has a 12 in 50 chance of being late.  
Which bus is more likely to not arrive on time?



2

Luke bought 7 raffle tickets from a book with 90 tickets. Ben bought 9 raffle tickets from a book with 130 tickets.  
Who is more likely to win?



3

Picking an odd number from 1, 2, 3, 4, 5, 6, 7, 8, 9.  
Choosing a prime number from 21, 22, 23, 29, 31, 39.  
Which is more likely?

4

Getting an even number on a roulette wheel  
or scoring a number greater than 15.  
Which is more likely?

