

MNU 2-09c

Homework 5

Bronze Level

Outcome 1 - Deciding on Profit or Loss

For the following, decide whether it is a profit or loss...

1

Buying Price = £135
Selling price = £160
Profit or Loss?



2

Buying Price = £60
Selling price = £50
Profit or Loss?



3

Buying Price = £215
Selling price = £210
Profit or Loss?



4

Buying Price = £25
Selling price = £20
Profit or Loss?



5

Buying Price = £95
Selling price = £85
Profit or Loss?



6

Buying Price = £55
Selling price = £75
Profit or Loss?



7

Buying Price = £65
Selling price = £80
Profit or Loss?



8

Buying Price = £185 000
Selling price = £160 000
Profit or Loss?



9

Buying Price = £2500
Selling price = £3500
Profit or Loss?



10

Buying Price = £7 million
Selling price = £8 million
Profit or Loss?



Outcome 2 - Calculating Profit or Loss

For each of the following, calculate the profit or loss...

1

Buying Price = £135
Selling price = £115
Calculate loss.



2

Buying Price = £20
Selling price = £55
Calculate profit.



3

Buying Price = £140
Selling price = £175
Calculate profit.



4

Buying Price = £100
Selling price = £85
Calculate loss.



5

Buying Price = £75
Selling price = £25
Calculate loss.



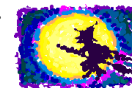
6

Buying Price = £60
Selling price = £85
Calculate profit.



7

Buying Price = £500
Selling price = £950
Calculate profit.



8

Buying Price = £125 000
Selling price = £160 000
Calculate profit.



9

Buying Price = £15 500
Selling price = £10 000
Calculate loss.



10

Buying Price = £1 million
Selling price = £7 million
Calculate profit.

